



CCD智能设备整线方案设计者及制造商

深圳市威利特自动化设备有限公司(总部)

地址：深圳市宝安区新桥街道芙蓉七路2号第二栋
电话：0755-27255688
传真：0755-88213652
销售电话：章生18902848845 尹生18523923290
售后电话：李生13392878825
网址：<http://szvility.com>
邮箱：peter@szvility.com



微信扫一扫，使用售后小程序



威利特导航二维码

深圳市威利特自动化设备有限公司(华东办事处)

地址：苏州市高新区大同路25号1期1#302
销售电话：13537719326
邮箱：weilite_lei@vilitymachine.com

深圳市威利特自动化设备有限公司(重庆办事处)

销售电话：叶生15871355633
邮箱：tina@szvility.com

Shenzhen Vility Automatic Machinery Co.,Ltd(Malaysia office)

Add : Bayan Lepas Industrial Estate,11900 Penang.Malaysia
Mobile phone/wechat : +86-13714614065
Email : brenda@szvility.com
website : www.ccdmachine.com
website : www.vilitymachine.com

秉承技术不断进步的原则，本目录中的图片(版本8) 说明及相关参数仅供参考，请以最新实物或双方约定为准！



AUTOMATIC MACHINERY

CCD印刷机系列、CCD打孔机系列、CCD模切机系列
CCD曝光机系列、CCD贴合机系列、CCD检测系列

CCD Vision printer series, CCD Vision puncher series,
CCD Vision die-cutting machine series, CCD Vision
exposure machine series, CCD Vision laminating
machine series, CCD Vision inspection series

TOWARD INDUSTRY 4.0



www.szvility.com

深圳市威利特自动化设备有限公司
SHENZHEN VILITY AUTOMATIC MACHINERY CO., LTD

HONORARY CERTIFICATE

- 中国印制电路行业会员
- 中国触控协会会员
- 深圳企业联合会会员
- 国家高新技术企业
- 中国广东省机器人常务理事单位

荣誉•资质



公司简介 COMPANY PROFILE

深圳市威利特自动化设备有限公司座落于高新产业研发生产云集的深圳市宝安区。以人为本，科技进步，服务至上是公司发展的方针。VILITY由Victory&Ability,Victory&Quality两组词构成，包含我们的企业文化汇智拓行，以质取胜。

近年来，威利特（VILITY）致力于研发工业4.0智能制造解决方案，已成功的为多家厂商提供了高效的无人化生产线，得到行业高度肯定。主要研发和生产的设备包括：CCD印刷机系列（卷/片对卷追标/CCD对位印刷机、卷对卷CCD对位精密印刷机（四柱）、卷对卷CCD对位精密印刷机、片材CCD对位精密印刷机+千层架收料机、片材CCD对位精密印刷机）；CCD打孔机系列（自动打孔机、自动钻孔机、卷对卷双头全自动打孔机、全自动叠对叠单头打孔机、异型CCD冲切机）；CCD模切机系列（卷对卷CCD精密模切机、大尺寸卷对卷CCD精密冲床、片对卷CCD模切机、片材CCD模切机）；CCD曝光机系列（卷对卷CCD曝光机）；CCD贴合机系列（片对卷CCD冲贴机、卷对卷CCD冲贴机、卷材/片材CCD加强片贴合机）；CCD检测机系列（AOI在线检测、五金/塑胶平整度CCD检测机、印刷产品表面CCD检测机）等CCD自动化设备。

我们将本着客户至上，以科技为先导，不断创新，努力改善，为客户提供高性价比，高可靠性的产品和满意的服务。用户的反映就是对我公司的鞭策，公司始终坚持“质量第一”“用户第一”“优质服务”“至诚至信”一切为客户，一切为市场，开拓技术含量更高，更适应用户需求的新产品。公司热诚欢迎广大客户前来参观指导、协商洽谈，与我们携手共创美好未来。

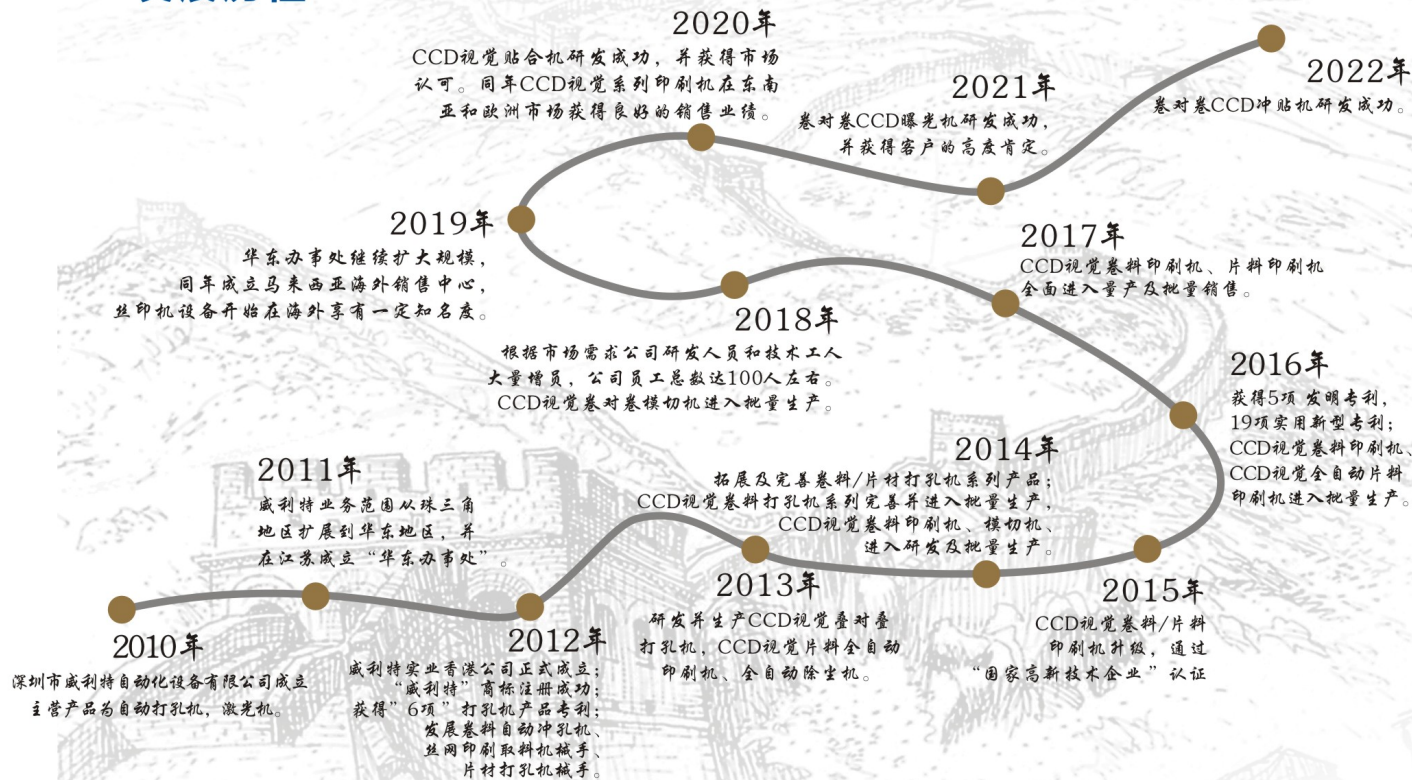
Shenzhen VILITY Automatic Machinery Co., Ltd. is located in the high-tech industry research and development and production of Shenzhen Bao'an District. People-oriented, scientific and technological progress, service first is the company's development policy. VILITY is composed of the words "Victory&Ability" and "Victory&Quality", which include our corporate culture: "Bring wisdom together to expand our business and win with quality".

In recent years, VILITY has been committed to developing Industry 4.0 intelligent manufacturing solutions and has successfully provided efficient unmanned production lines for a number of manufacturers, which has been highly recognized by the industry. The main equipment include: CCD registering screen printing machine series (roll/sheet dual purpose screen printing machine, roll to roll CCD registration screen printing machine (four-post), roll to roll CCD registration screen printing machine, sheet to sheet CCD registration screen printing machine+multi-layer rack receiving machine, sheet to sheet CCD registration screen printing machine); CCD vision punching machine series (automatic guide hole punching machine, automatic guide hole drilling machine, roll to roll double-head auto CCD punching machine, roll to roll CCD dislocated dual punching machine , auto sheet to sheet CCD hole punching/drilling machine , small type CCD vision die cutting machine); CCD vision die cutting machine series (roll to roll CCD die cutting machine , roll to roll CCD alignment hydraulic press , sheet CCD die cutting machine); CCD exposure printing machine series (roll to roll double-sided CCD exposure machine); CCD laminating machine series (sheet to roll CCD laminating machine (single/dual head) , roll to roll CCD alignment hydraulic press with laminating function , coil/sheet CCD reinforced sheet laminating machine); CCD vision inspection machine series(AOI online inspection, hardware/plastic flatness CCD inspection machine, printing product surface CCD inspection machine)and other CCD alignment automatic equipment.

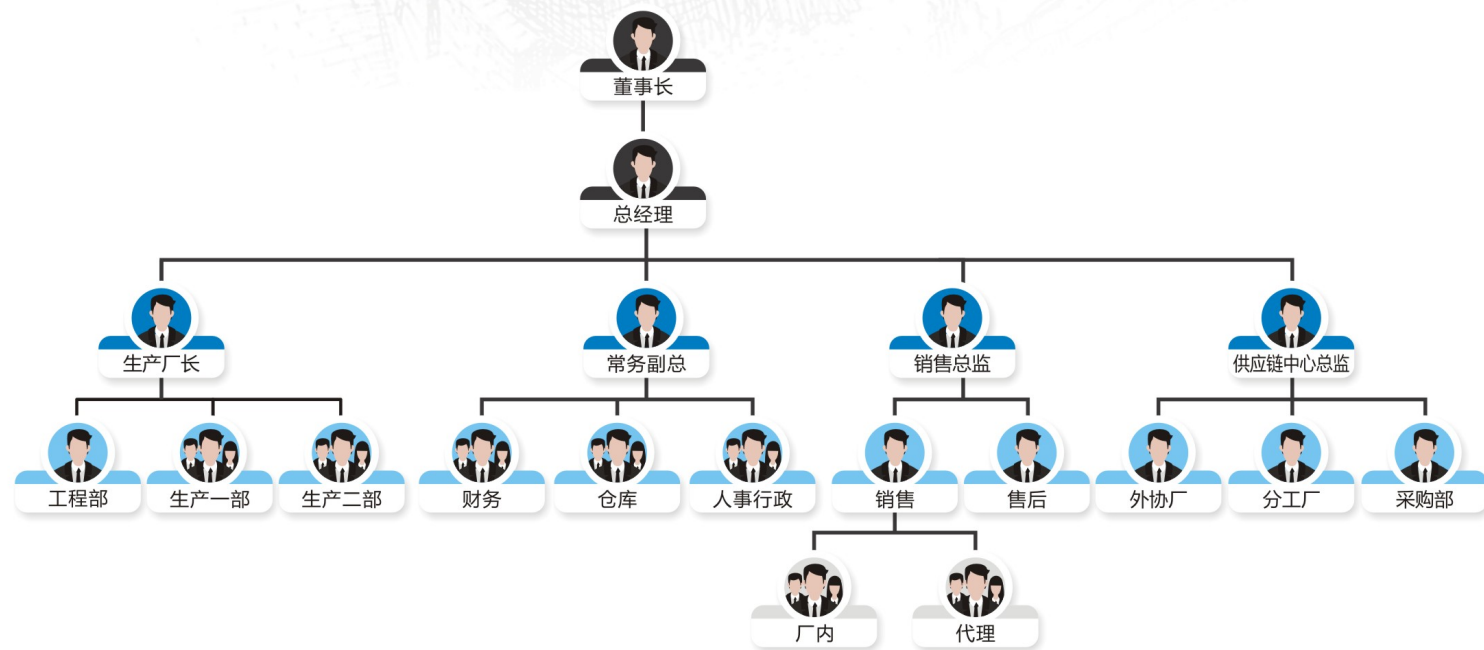
We will be the spirit of customer first, technology as the guide, continuous innovation, efforts to improve, to provide customers with high cost performance, high reliability of products and satisfactory service. The reflection of the user is the spur to my company, the company always adhere to the "quality first", "user first", "quality service", "sincerity to the letter" all for the customer, all for the market, to develop higher technology content, more adapt to the user needs of the new products. Our company warmly welcomes customers to visit and guide, negotiate and create a better future with us hand in hand.



发展历程



组织架构



目录 Catalogue

1.CCD印刷机系列 CCD Registration Screen Printing Machine Series		
卷/片对卷追标/CCD对位印刷机	Roll/Sheet Dual Purpose Screen Printing Machine	05
卷对卷CCD对位精密印刷机（四柱）	Roll to Roll CCD Registration Screen Printing Machine(Four-post)	07
卷对卷CCD对位精密印刷机	Roll to Roll CCD Registration Screen Printing Machine	09
片材CCD对位精密印刷机+千层架收料机	Sheet to Sheet CCD Registration Screen Printing Machine+Multi-layer Rack Receiving Machine	11
片材CCD对位精密印刷机	Sheet to Sheet CCD Registration Screen Printing Machine	13
2.CCD打孔机系列 CCD Vision Punching Machine Series		
自动打孔机	Automatic Guide Hole Punching Machine	14
自动钻孔机	Automatic Guide Hole Drilling Machine	14
卷对卷双头全自动打孔机	Roll to Roll Double-head Auto CCD Punching Machine	15
卷对卷双头错位打孔机	Roll to Roll CCD Dislocated Dual Punching Machine	16
全自动叠对叠单头打孔机	Auto Sheet to Sheet CCD Hole Punching/Drilling Machine	17
异型CCD冲切机	Small Type CCD Vision Die Cutting Machine	18
3.CCD模切机系列 CCD Vision Die Cutting Machine Series		
卷对卷CCD精密模切机	Roll to Roll CCD Die Cutting Machine	19
大尺寸卷对卷CCD精密冲床	Roll to Roll CCD Alignment Hydraulic Press	20
片材CCD模切机	Sheet CCD Die Cutting Machine	21
4.CCD曝光机系列 CCD Exposure Printing Machine Series		
卷对卷CCD曝光机	Roll to Roll Double-sided CCD Exposure Machine	22
5.CCD贴合机系列 CCD Laminating Machine Series		
片对卷CCD贴合机	Sheet to Roll CCD Laminating Machine(single/dual head)	23
卷对卷CCD冲贴机	Roll to Roll CCD Alignment Hydraulic Press with Laminating Function	24
6.其他设备 Other Machines		
卷对卷AOI在线检测	Roll to Roll online Inspection Machine	25
卷料切片机	Roll to Sheet Cutting Machine	26
撕膜机	Film-tearing Machine	26
光刻机	Screen Engraving Machine	26
卷料单/多工位收、放料机	Single/Multi-Station Rewinder & Unwinder	27
片料单/多工位尾端收料机	Single/Multi-Station Stacking Machine	27
7.固化线系列 Curing Line Series		
IR固化线	IR Tunnel Furnace	28
LED UV光固机	LED UV Curing Machine	28
卷料悬浮立式烤箱	Roll to roll suspension Vertical Drying Oven	29
8.整线方案参考 Automatic Production Line Solution For Reference		
全自动印刷整线方案	Fully automatic screen printing line solution	30
自动涂布、曝光一体生产线	Automatic Coating+Exposure Line Solution	30

CCD印刷机系列

CCD Registration Screen Printing Machine Series

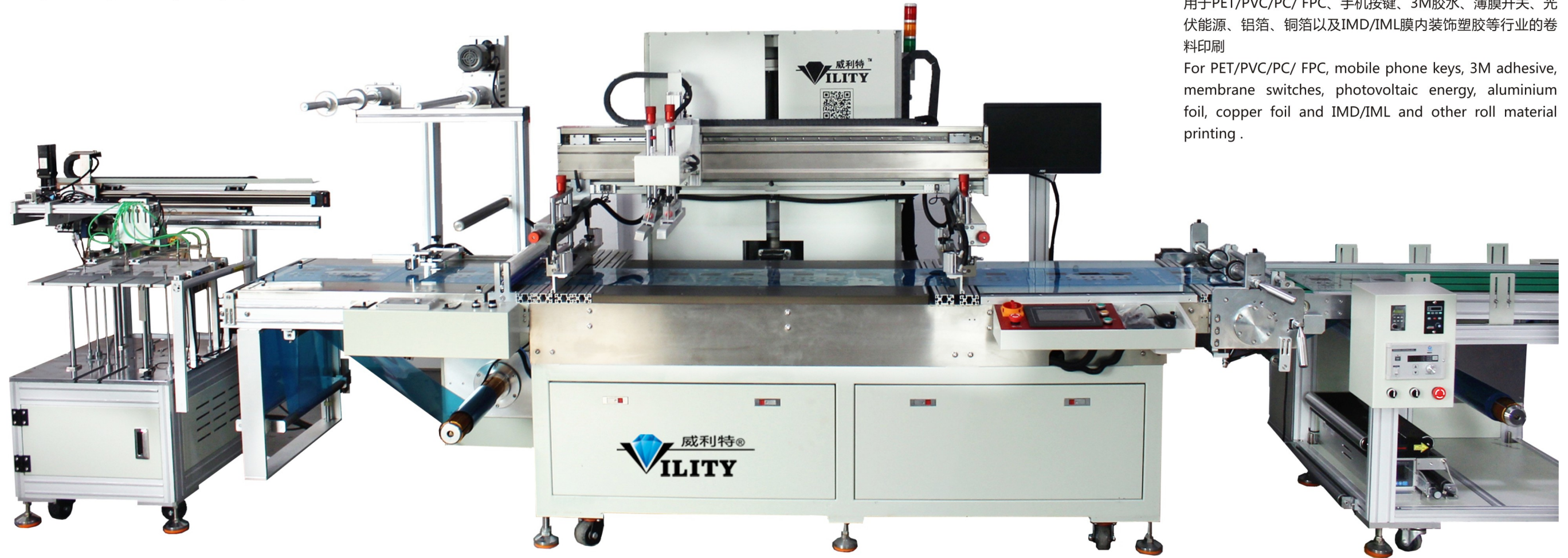
卷/片对卷追标/CCD对位印刷机

Roll/Sheet Dual Purpose Screen Printing Machine
Model: Electric Eye Tracking/CCD Registering(optional)

适用范围 Application:

用于PET/PVC/PC/ FPC、手机按键、3M胶水、薄膜开关、光伏能源、铝箔、铜箔以及IMD/IML膜内装饰塑胶等行业的卷料印刷

For PET/PVC/PC/ FPC, mobile phone keys, 3M adhesive, membrane switches, photovoltaic energy, aluminium foil, copper foil and IMD/IML and other roll material printing .



产品参数 Product parameters

项目名称 Item	Type 型号	VT5050PR
台面尺寸 Printing table size		660x1100mm
印刷面积 Printing size		W500*L500mm (片料时) [Sheet material] W500*L900mm (卷料时) [Roll material]
网框尺寸 Frame size		W800mmxL1400mm
重量 Weight		2100kg
设备尺寸 Overall size(L*W*H)		L6000*W1500*H1800mm
效率 Speed		片料900~1000PSC/H [Sheet material] 卷料1000PSC/H [Roll material]
网框厚度Frame thickness		20-50MM
印刷精度Printing accuracy		±0.1mm
气源压力Air source pressure		4-6kg/psi
额定电压Rated voltage		380V-50Hz
功率 power		6KW

样品图片



CCD印刷机系列

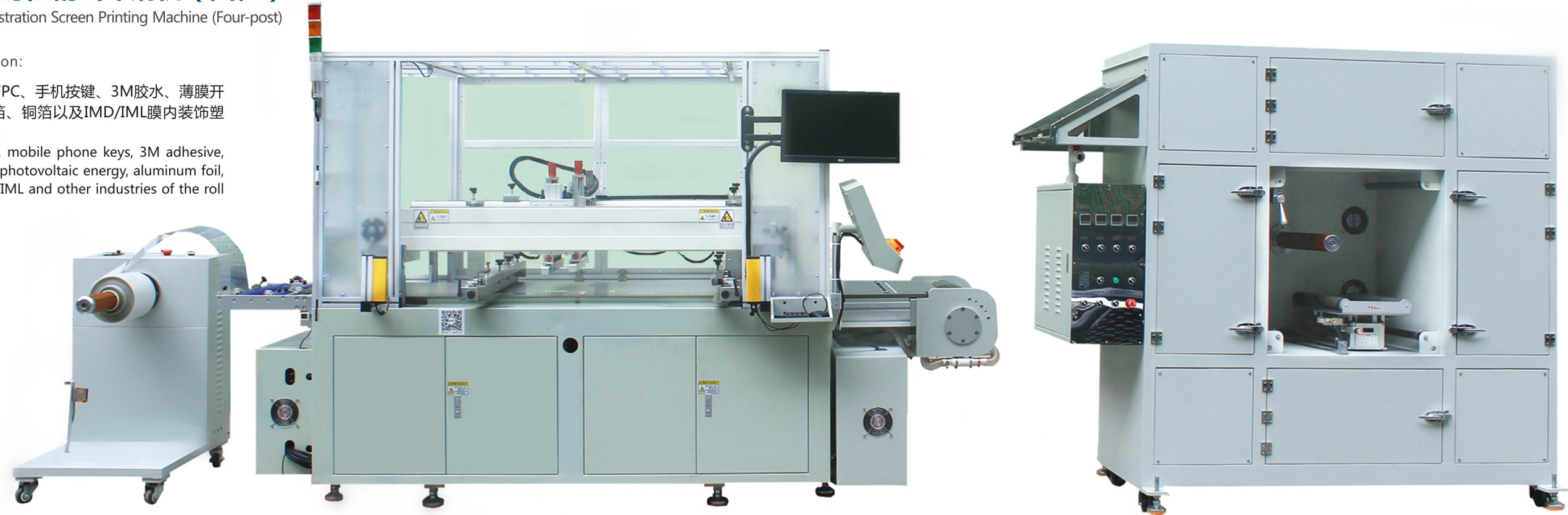
CCD Registration Screen Printing Machine Series

卷对卷CCD对位精密印刷机（四柱）

Roll To Roll CCD Registration Screen Printing Machine (Four-post)

适用范围 Application:

用于PET/PVC/PC/FPC、手机按键、3M胶水、薄膜开关、光伏能源、铝箔、铜箔以及IMD/IML膜内装饰塑胶等行业的卷料印刷
 For PET/PVC/PC/FPC, mobile phone keys, 3M adhesive, membrane switches, photovoltaic energy, aluminum foil, copper foil and IMD/IML and other industries of the roll material printing.



产品参数 Product parameters

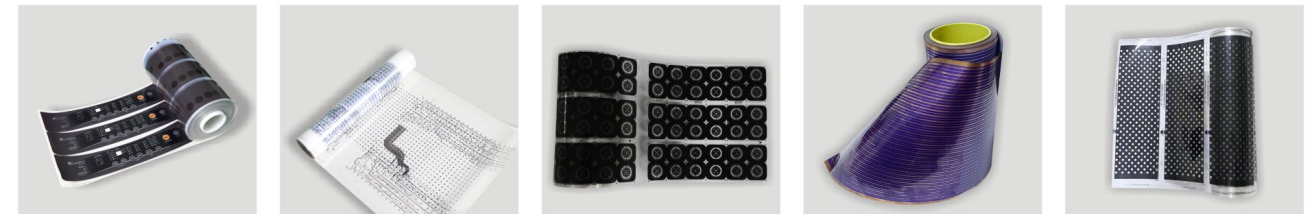
项目名称 Item	Type 型号	VT6090PR4-1	VT60120PR4-1
台面尺寸 Printing table size		660mm×1150mm	750mm×1450mm
印刷面积 Printing size		500mm×900mm	600mm×1200mm
网框尺寸 Frame size		800mm×1400mm	800mm×1500mm
重量 Weight		2000kg	2500kg
设备尺寸 Overall size(L*W*H)		3054×1300×1800mm	3505×1910×1870mm
项目名称 Item	参数Parameter		
网框厚度 Thickness of frame	20-50MM		
CCD精度 Precision of CCD	±0.02mm		
印刷精度 Precision of printing	±0.05mm		
气源压力 Air pressure	0.6~0.8MPa		
耗气量 Air consumption	2.6L/cycle		
额定电压 Rated voltage	380V-50Hz		
功率 Power	6kw		
CCD中心距 CCD center distance	纵向中心距400±60，支持定做 Longitudinal centre distance 400±60, customisable.		
备注 Note	支持其他印刷规格尺寸定做 customisable		

烤箱 Hot air oven

规格 Specification

温度范围 Temperature range	常温~180℃
入料宽度 Width of feeding	450mm/550mm
工作电压 Operating voltage	380V 3 Phase 35KW/H, 恒温后15KW/H(15KW/H at constant temperature)
加热温度 Heating temperature	80±4℃
烘干长度 Length of drying	48米 支持定做60米-90米 (Customizable)
外形尺寸 Overall size	L2100*W1250*H2100mm
烘烤方式 Method of drying	热风循环 (Hot air circulation.)
制造材质 Manufacturing material	内胆304不锈钢，外形冷轧板烤漆 (304 stainless steel liner, cold rolled sheet baked on the outside)

样品图片



CCD印刷机系列

CCD Registration Screen Printing Machine Series

卷对卷CCD对位精密印刷机

Roll To Roll CCD Registration Screen Printing Machine



适用范围 Application:

薄膜开关/防爆膜/扩散片/ITO导电膜/PET/PVC等软性材料FPC天线板，动力电池板，可根据材料要求定做机头对位和台面对位两种方式。

For PET/PVC/PC/FPC, mobile phone keys, 3M adhesive, membrane switches, photovoltaic energy, aluminum foil, copper foil and IMD/IML and other industries of the roll material printing.

样品图片



产品参数 Product parameters

项目名称 Item	Type 型号	VT6090PR-1	VT35120PR-1
台面尺寸 Printing table size		660mm×1150mm	450mm×1500mm
印刷面积 Printing size		560mm×900mm	250mm×1200mm
网框尺寸 Frame size		900mm×1400mm	600mm×1800mm
重量 Weight		2000KG	2000KG
设备尺寸 Overall size(L*W*H)		4600×1700×2200mm	3230×1150×1800mm

项目名称 Item	参数Parameter
网框厚度 Thickness of frame	25-50mm
CCD精度 Precision of CCD	±0.02mm
印刷精度 Precision of printing	±0.05mm
气源压力 Air pressure	4-6kg/psi
耗气量 Air consumption	2.6L/cycle
额定电压 Rated voltage	380V-50Hz
功率 Power	5kw
CCD中心距 CCD center distance	330mm可调范围，横向±80mm，纵向±50mm支持定做 330mm adjustable range, horizontal ±80mm, vertical ±50mm. Customized
备注 Note	支持VT4560、VT35150、VT55120、VT55150及其他印刷规格尺寸订做 Customized.

CCD印刷机系列

CCD Registration Screen Printing Machine Series

片材CCD对位精密印刷机+干层架收料机

Sheet To Sheet CCD Registration Screen Printing Machine+Multi-layer Rack Receiving Machine

适用范围 Application:

PC复合板、亚克力、薄膜开关、FPC、镜片、PVC/PC面板、IMD/IML、汽车仪表等自动 CCD精密对位印刷干层架收料

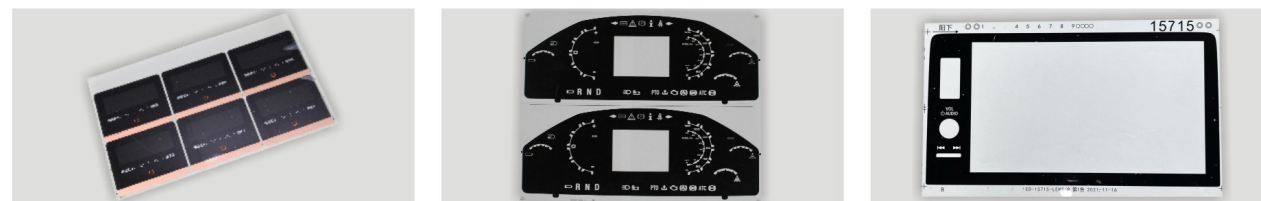
PC laminate, acrylic, membrane switch, FPC, lens, PVC/PC panel, IMD/IML, car dashboard, etc.



产品参数 Product parameters

项目名称 Item	Type 型号	VT4560P-SL	VT6090P-SL
台面尺寸 Printing table size		680mm×880mm	780mm×1100mm
印刷面积 Printing size		400mm×500mm	600mm×900mm
网框尺寸 Frame size		800mm×1000mm	900mm×1100mm
设备尺寸 Overall size(L*W*H)		L3900×W2250×H2100mm	L4200×W2250×H2100mm
重量 Weight		2300kg	2800kg

样品图片



项目名称 Item	参数Parameter
网框厚度 Thickness of frame	25-50mm
CCD精度 Precision of CCD	±0.02mm
印刷精度 Precision of printing	±0.05mm
气源压力 Air pressure	4-6kg/psi
耗气量 Air consumption	2.6L/cycle
额定电压 Rated voltage	380V-50Hz
功率 Power	6.5kw
CCD中心距 CCD center distance	300mm可调范围横向±80mm, 纵向±40mm 330mm adjustable range, horizontal ±80mm, vertical ±40mm. Customized

CCD印刷机系列

CCD Registration Screen Printing Machine Series

片材CCD对位精密印刷机

Sheet To Sheet CCD Registration Screen Printing Machine

适用范围 Application:

薄膜开关/玻璃盖板/亚克力/ITO/导电膜/复合后盖板

Membrane switch, glass cover, acrylic board, conductive film, composite board back cover and so on.



样品图片



产品参数 Product parameters

项目名称 Item	Type 型号	VT4050P-1	VT6090P-1
台面尺寸 Printing table size		680mm×880mm	780mm×1100mm
印刷面积 Printing size		400mm×500mm	600mm×900mm
网框尺寸 Frame size		800mm×1000mm	900mm×1100mm
设备尺寸 Overall size(L*W*H)		L3300×W1460×H2100mm	L3630×W1600×H2100mm
重量 Weight		1500kg	1800kg

CCD打孔机系列

CCD Vision Punching Machine Series

半自动打孔机 VT015/VTZ15

Semi-auto Guide Hole Punching Machine

适用范围 Application:

薄膜开关、导电膜、IMD/IML/PET/PVC菲林棕片、FPC软板、面板、标牌、铝板、铝基板等薄金属自动冲孔定位
Membrane switches, conductive films, IMD/IML/PET/PVC film brown sheets, FPC flexible boards, home appliance panels, signage, aluminium plates, aluminium substrates, thin metal sheets, etc.

产品参数 Machine parameters

项目名称 Item	参数 Parameter
冲孔直径 Punching diameter	Φ1.0mm-5.0mm (模具尺寸可定制) Mould tool sizes can be customised.
最大冲力 Max punching force	2500N (VT015) 700N (VTZ15)
气压要求 Pneumatic pressure	0.4-0.8Mpa
台面 Working table	精磨大理石 (can be customised.)
外形尺寸 Outline size	1250×700× (770+260) mm
加工精度 Processing accuracy	±0.02mm
材料宽度 Material width	0-520mm (can be customised.)
理论速度 Theoretical speed	0.35 s/hole
实际速度 Actual speed	0.8-1.5s/hole
光源选择 Light source	透射红外线, 反射三色光 (可选) Transmits infrared light, reflects tricolour light (optional)



CCD打孔机系列

CCD Vision Punching Machine Series

半自动钻孔机 VTP15

Semi-auto Guide Hole Drilling Machine

适用范围 Application

单双面板/PCB多层板/玻璃纤维板/复合板/PVC面板/亚克力等易碎塑料片材定位钻孔
Sheet position hole drilling machine for: Single and double panel/PCB multilayer board/Fiberglass board/Composite board/PVC panel/Acrylic and other fragile plastic.

产品参数 Machine parameters

项目名称 Item	参数 Parameter
钻孔直径 Drilling diameter	0.1mm-3.0mm Acrylic/PVC
加工精度 Processing accuracy	±0.02mm
加工速度 Processing speed	0.6 s/hole
加工厚度 Processing thickness	0.1-3mm
基本电耗 Power consumption	0.5kw/h
最大转速 Max. speed	24000-42000 Rev/min
钻孔形式 Type of drilling	由下往上钻 Drilling from bottom to top
固定系统 Fixed system	压脚压平被冲孔的材料, 钻孔更精准 The presser foot flattens the material for more accurate drilling
气压要求 Pneumatic pressure	0.4-0.8Mpa
设备重量 Machine weight	228±2kg
外形尺寸 Outline size	160×850× (770+226) mm
废料处理 Waste handling	自带吸尘装置 Self-contained vacuum cleaner
电源要求 Voltage	AC220±10V-50Hz



CCD打孔机系列

CCD Vision Punching Machine Series

卷对卷双头全自动打孔机

Roll To Roll Double-head Auto CCD Punching Machine

适用范围 Application

手机按键、手机面板、导电膜、薄膜开关、胶片、IMD/IML、FPC等柔性卷材实现全自动双边一次性定位冲孔，自动修正拉料误差，实现无人看守整卷自动定位打孔机。尾端可接切片机、模切机实现一人可看守一条线。

Application: Mobile phone keypad, mobile phone panel, conductive film, membrane switch, film, IMD/IML, FPC and other flexible coil materials.

Features: Automatic positioning, dual punching at one time, automatically correct pulling error to achieve unmanned supervision for the whole roll material. (PS: Cutter and die cutter can be connected at the end of the machine to achieve 1 person handle 1 line.)



产品参数 Machine parameters

项目名称 Item	Type 型号	VTQ15-06	VTQ15-06I
加工精度 Processing accuracy		±0.02mm	±0.02mm
材料宽度 Material width		100-550mm	100-280mm
理论速度 Theoretical speed		0.5 s/hole	0.35 s/hole
实际速度 Actual speed		0.8-1.2 s/hole (测试条件: 流水线方向孔距100mm)	0.6-1 s/hole (测试条件: 流水线方向孔距100mm)
冲孔直径 Punch diameter		Φ1.0mm-5.0mm (Mould tool sizes can be customised)	Φ1.0mm-5.0mm (Mould tool sizes can be customised)
Y轴跳距冲孔 Y-axis jump distance		支持跳孔/斜线冲孔 Supports jump hole/ oblique line punching	支持跳孔/斜线冲孔 Supports jump hole or oblique line punching
最大冲力 Max punching force		2500N (can be customised)	2500N (can be customised)
运动轴数 Number of motion axes		5轴 Automatic 5 axis	5轴 Automatic 5 axis
光源选择 Light source		透射红外线, 反射三色光(可选) Transmits infrared light, reflects tricolour light (optional)	透射红外线, 反射三色光(可选) Transmits infrared light, reflects tricolour light (optional)
气压要求 Pneumatic pressure		0.4-0.8Mpa	0.4-0.8Mpa
台面材质 Working table		金属氧化台面 Oxidised metal worktops	金属氧化台面 Oxidised metal worktops
外形尺寸 Outline size		2610mm×780mm×1100mm (can be customised)	1800mm×720mm×1100mm (can be customised)

样品图片



CCD打孔机系列

CCD Vision Punching Machine Series

卷对卷双头错位打孔机

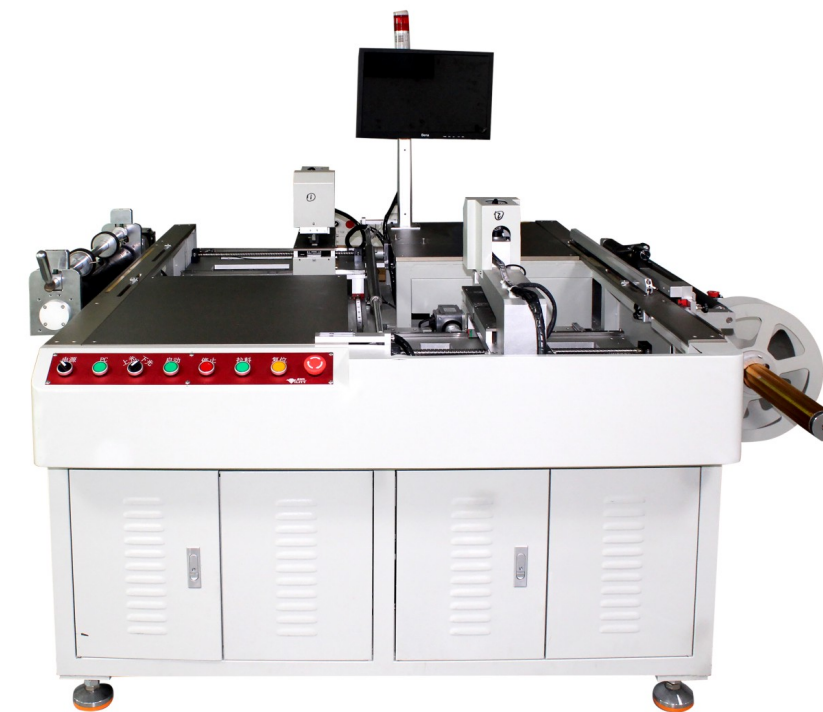
Roll To Roll CCD Dislocated Dual Punching Machine

适用范围 Application:

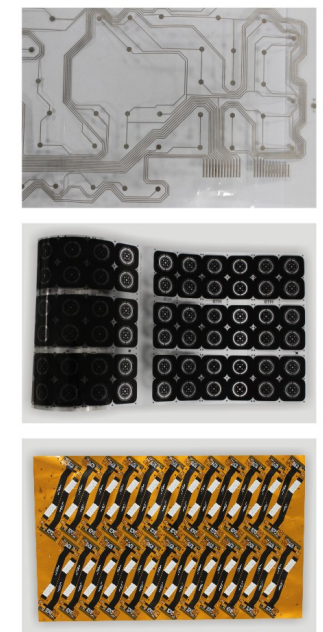
手机按键、手机面板、导电膜、薄膜开关、胶片、IMD/IML、FPC等柔性卷材实现全自动双边一次性定位冲孔，自动修正拉料误差，实现无人看守整卷自动定位打孔机。尾端可接切片机、模切机实现一人可看守一条线。

Mobile phone keypad, mobile phone panel, conductive film, membrane switch, film, IMD/IML, FPC and other flexible coil materials.

Features: Automatic positioning, dual punching at one time, automatically correct pulling error to achieve unmanned supervision for the whole roll material. (PS: Cutter and die cutter can be connected at the end of the machine to achieve 1 person handle 1 line.)



样品图片



产品参数 Machine parameters

项目名称 Item	Type 型号	VTQ15-08
加工精度 Processing accuracy		±0.02mm
材料宽度 Material width		100-750mm
理论速度 Theoretical speed		0.5 s/hole
实际速度 Actual speed		0.8-1.2 s/hole (测试条件: 流水线方向孔距100mm)
冲孔直径 Punch diameter		Φ1.0mm-5.0mm (Mould tool sizes can be customised)
Y轴跳距冲孔 Y-axis jump distance		支持跳孔/斜线冲孔 Supports jump hole/ oblique line punching
最大冲力 Max punching force		2500N (can be customised)
运动轴数 Number of motion axes		5轴 Automatic 5 axis
光源选择 Light source		透射红外线, 反射三色光(可选) Transmits infrared light, reflects tricolour light (optional)
气压要求 Pneumatic pressure		0.4-0.8Mpa
台面材质 Working table		金属氧化台面 Oxidised metal worktops
外形尺寸 Outline size		2610mm×1200mm×1200mm (can be customised)

CCD打孔机系列
CCD Vision Punching Machine Series

全自动叠对叠单头打孔机/钻孔机

VTD-D01

Auto Sheet To Sheet CCD Hole Punching/Drilling Machine

适用范围 Application

FPC、PET、3M不干胶、导电膜、标牌铭牌等孔位较多的片材
按照参数步距自动移位冲孔，减少人工每个孔位到相机识别范围的简单重复动作，每人可看2-3台机

FPC, PET, 3M adhesive, conductive film, labels, nameplates and other sheet materials with many holes.

Features: Automatically move to punch according to the coordinates set, it reduces the manual easy & repeated action. 1 person can handle 2-3 machines.

备注：亚克力、玻璃板等易碎产品可选择钻孔机

Note: Drilling machines are suitable for fragile products such as acrylic and glass panels.



产品参数 Machine parameters

项目名称 Item	参数 Parameter
最大材料尺寸Maxi material size	500mm×400mm
冲孔直径 Punching diameter	Φ1.0mm-5.0mm (模具尺寸可定制) Mould tool sizes can be customised.
最大冲力 Max punching force	600kg
冲孔厚度Punching thickness	0.1-1.2mm (视材料而定) Depending on the material
冲孔速度Punching speed	0.5秒/孔 (除去上下料切换料时间, 连续冲孔速度视行程而定) Excluding the loading and unloading switching time, the continuous punching speed depends on the stroke
冲孔精度 Punching accuracy	≤±0.02mm
光源选择Light source	多彩反射光、透射白光等Colorful reflected light, transmitted white light, etc
功耗Power consumption	1.5KW
电源要求Power requirements	AC200V~240V
外形尺寸 Overall dimensions	1620×1420×1300mm
设备重量 Machine weight	450kg

CCD打孔机系列
CCD Vision Punching Machine Series

异型CCD冲切机

Small Type CCD Vision Die Cutting Machine

适用范围 Application

FPC、PET、3M不干胶、导电膜、标牌铭牌等产品直接按照参数步距自动移位金手指、IMD膜片、家电面板、排线等冲裁产品无需打定位孔，精度更高，对小尺寸产品融合了打孔和冲切两种功能，效率更高，更安全！一人可多看几台机。

FPC, PET, 3M adhesive, conductive film, nameplates, IMD, appliance panel, flat cable and so on.

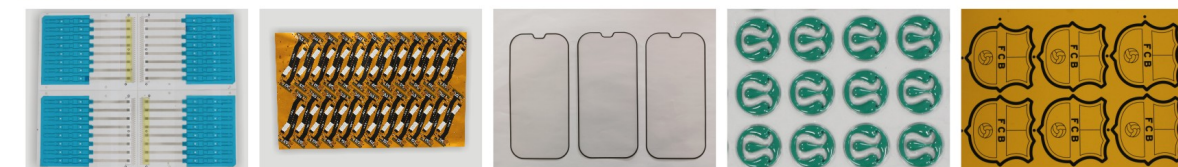
Features: Punching positioning hole is not needed, automatically move to punch according to the coordinates set, this machine is perfect for small size products, which integrate hole punching and die cutting, it's more efficient and safer! 1 person can handle several machines.



产品参数 Machine parameters

项目名称 Item	参数 Parameter
产能效率 Productivity	1000-1200 T/H
加工精度 Processing accuracy	±0.05mm
工作板厚 Working plate thickness	0.1-0.5mm
冲头数量 Number of punches	1
最大材料尺寸 Maxi material size	500*500mm (can be customised)
模具可冲尺寸 Punchable size	≥75×100mm (can be customised)
冲孔力量 Punching force	5T
视野范围 Field of view	9×12 cm
环境要求 Temperature	常温 room temperature
电压要求 Voltage	220V
空压用量 Air consumption	2.6L/cycle
耗电量 Electricity consumption	3KW
外形尺寸 Overall dimensions	1900mm×1970mm×1932mm

样品图片



CCD模切机系列

CCD Vision Die Cutting Machine Series

卷对卷CCD精密模切机

Roll To Roll CCD Die Cutting Machine

适用范围 Application

卷对卷薄膜开关、家电面板、COB灯带、FET/PVC线路、扩散膜片、FPC双面线路板冲贯穿孔等CCD对位模切
Membrane switches, appliance panels, COB light strips, FET/PVC circuits, diffusion film, FPC double-sided circuit board and other flexible roll material.



产品参数 Machine parameters

Type 型号	VT350CR-S	VT450CR-S	VT520CR-S
项目名称 Item			
最大尺寸 Max size	350×350mm	450×450mm	500×500mm
最小尺寸 Min size	80×80mm	80×80mm	80×80mm
模切精度 Die Cutting Precision	±0.05mm	±0.05mm	±0.05mm
模切压力 Pressure	8T(can be customised)	15T(can be customised)	18T(can be customised)
对位精度 Precision of alignment	±0.02mm	±0.05mm	±0.05mm
对位方式 Mode of alignment	材料XYθ调整X,Y,θaxis align	材料XYθ调整X,Y,θaxis align	材料XYθ调整X,Y,θaxis align
模切速度 Die cutting speed	4000-6000P/H	4000-6000P/H	2000-2500P/H
冲模匹配 Cutting method	刀模/钢模Knife/steel mold	刀模/钢模Knife/steel mold	刀模/钢模Knife/steel mold
冲力模式 Run motor	伺服电机Servo motor	伺服电机Servo motor	伺服电机Servo motor
运动模式 Run mode	相机拍照CCD registering	相机拍照CCD registering	相机拍照CCD registering

CCD模切机系列

CCD Vision Die Cutting Machine Series

大尺寸卷对卷CCD精密冲床

Roll To Roll CCD Alignment Hydraulic Press

适用范围 Application

大尺寸动力电路板、S型FPC灯带、背光板等CCD对位冲切
Power circuit panels, S-type FPC light strips, backlight panel, etc.



样品图片



产品参数 Machine parameters

Type 型号	VT3560CR-Y	VT50120CR-Y
项目名称 Item		
最大尺寸 Maxi size	350×600mm	350×1200mm
冲力 Punching force	120T	200T
冲力模式Punching mode	液压+伺服Hydraulic + servo	液压+伺服Hydraulic + servo
冲切速度Punching speed	600-900P/H	400-700P/H

CCD模切机系列

CCD Vision Die Cutting Machine Series

片材CCD模切机

Sheet CCD Die Cutting Machine

适用范围 Application

薄膜开关、ITO/PET/PVC/PC等、导电膜、IMD家电面板、汽车面板、手机膜片等印刷或压花后CCD定位模切，可不用打孔全自动高精度冲切。

Membrane switch, ITO/PET/PVC/PC, conductive film, IMD, appliance panel, automotive panel, mobile phone diaphragm, etc.

Features: CCD positioning die cutting after printing and embossing, positioning hole is not needed for high precise die cutting.



产品参数 Machine parameters

项目名称 Item	Type 型号	VT520MQ-PS	VT55120MQ-PI
最大尺寸 Max size		500×500mm	520×1200mm
模切精度 Die Cutting Precision		±0.05mm	±0.1mm
模切压力 Pressure		15T	120T
对位精度 Precision of alignment		±0.02mm	±0.05mm
对位方式 Mode of alignment		材料XYθ调整 X,Y,θaxis align	材料不动，刀模XYθ调整 Material does not move, X,Y,θaxis align
模切速度 Die cutting speed		1000-1500 P/H	300-600P/H
冲模匹配 Cutting method		刀模/钢模Knife/steel mold	刀模knife
冲力模式 Punching motor		伺服电机Servo motor	油压Oil pressure
运动模式 Run mode		相机拍照CCD registering	相机拍照CCD registering

CCD曝光机系列

CCD Exposure Printing Machine Series

卷对卷双面CCD曝光机

Roll To Roll Double-sided CCD Exposure Machine

适用范围 Application

针对卷料动力电池板、COB灯带、天线板等COB双面/单面卷对卷曝光。

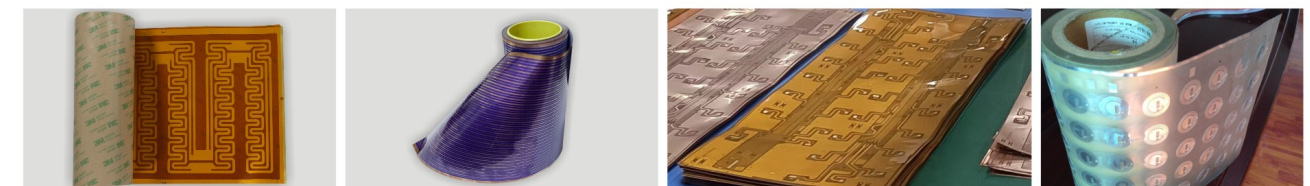
For coiled material power battery panel, COB light strip, antenna plate and other COB double-sided/single-sided roll to roll exposure.



产品参数 Machine parameters

项目名称 Item	Type 型号	VT3560BG-2	VT50180BG-2
设备重量 Equipment weight		2000kg	3000kg
安装方式 Mounting method		落地式Floor standing	落地式Floor standing
材料尺寸 (宽×长) Material size (W x L)		250×600mm	500×1800mm
CCD对位精度 CCD alignment accuracy		±0.02mm	±0.02mm
相机照射方式 CCD identification method		从材料顶部识别Identify from top	从材料顶部识别Identify from top
CCD个数 Number of CCD		两组CCD Two CCD sets	两组CCD Two CCD sets
曝光方式 Exposure method		平面灯 Flat light	平面灯台 (移动扫描曝光) Flat light
曝光面数 Exposure surfaces		双面 Double-sided	双面 Double-sided
机器外形尺寸 Outline Dimensions		5200×1320×0825	L6500×W1320×H1825
控制系统 Control system		威利特VILITY	威利特VILITY
电源规格 Power supply specification		3相、380V、50Hz	3相、380V、50Hz
气源压力 Air supply pressure		5-6kg·m ²	5-6kg·m ²

样品图片



CCD贴合机系列

CCD Laminating Machine Series

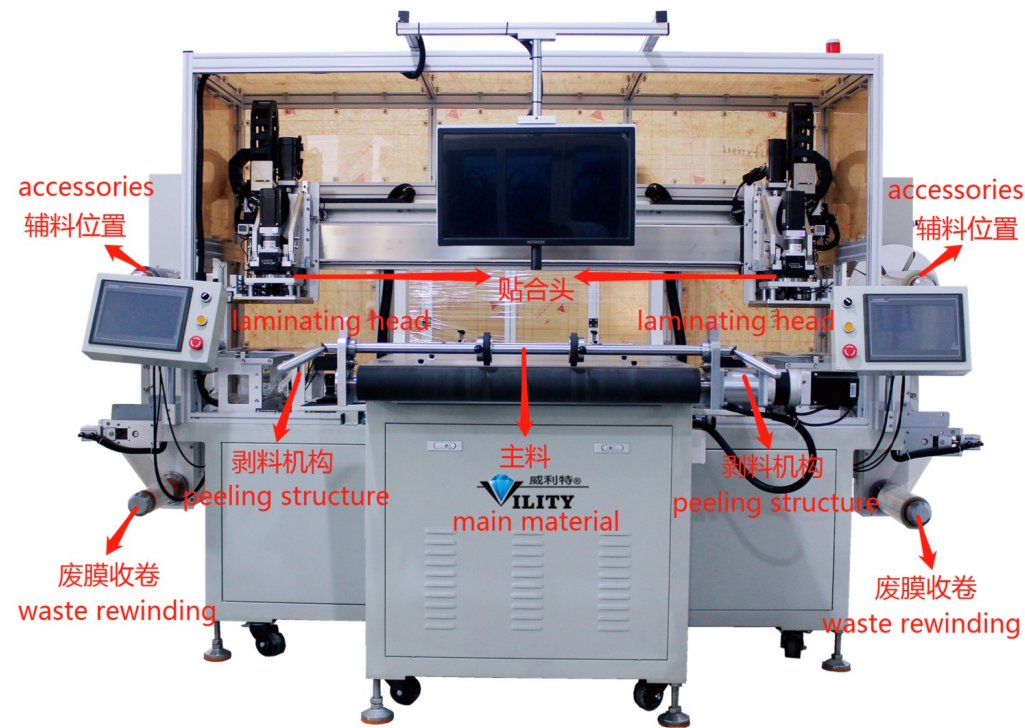
片对卷CCD贴合机 (单/双头)

Sheet To Roll CCD Laminating Machine (single/dual head)

适用范围 Application

针对卷料印刷面板及线路上贴装加强片、屏蔽膜、功能片或标签、可手贴、OCA光学胶、泡棉、绿护膜、3M胶等自动剥料CCD对位贴片。是人工贴片速度的3-5倍，精度更高、达到省人工、提高良率的效果！

Laminating reinforced sheet for printed panel and printed circuit, screened film, functional film, labels, stickers, OCA optical glue, foam, green protected film, 3M adhesive, etc. Features: Automatic material-peeling and CCD alignment laminating, the laminating speed is 3-5 times than labor, higher precision, save labor and improve production yield.



产品参数 Machine parameters

项目名称 Item	参数 Parameter
贴合位置重复精度 Repeat accuracy of laminating position	±0.05mm
贴合位置精度 Laminating position accuracy	±0.15mm
设备节拍 Machine speed	10S
卷料材料宽度 Roll material width	580MM
贴装材料大小 Size of mounting material	60*40-200*200
贴头旋转角度 Rotation angle of laminating head	90°
贴装产品外观要求 Appearance requirement	贴装后无压痕，边缘气泡小于0.3MM，材料无划伤 No traces, edge bubbles less than 0.3mm, no scratches
设备尺寸 Outline Dimensions	2715*2085*1820MM
设备重量 Equipment weight	3000kg

CCD贴合机系列

CCD Laminating Machine Series

卷对卷CCD冲贴机

Roll To Roll CCD Alignment Hydraulic Press with Laminating Function

功能 Function

- 1) 针对FPC卷料COB灯带、动力电池板、线路与PI膜卷对卷CCD在线对位精密贴合！根据图形涨缩同步调整PI膜偏移误差。
- 2) 针对薄膜3M胶边冲切边在线对贴面板。

1) For FPC rolls COB light strips, Solar energy panel, Circuit board and PI film roll-to-roll CCD online alignment precision lamination! Adjust the PI film offset error synchronously according to the graph swelling and shrinking.
2) For film and 3M adhesive, online laminating while punching can be achieved.

原理 Principle

可消除材料涨缩产生的误差，实现整卷在线精密冲贴并热压压合。
Eliminate the errors caused by expansion and shrink, achieve online punching and laminating and hot-press for the whole roll material.



产品参数 Machine parameters

项目名称 Item	Type 型号	VT450CT
产品尺寸 Product Size		250mm
模切精度 Die-cutting accuracy		±0.05mm
模切压力 Die-cutting pressure		15T
对位精度 Alignment accuracy		±0.02mm
对贴精度 Laminating position accuracy		±0.1mm
对位方式 Alignment method		材料XYθ调整X,Y,θaxis align
模切速度 Die cutting speed		1000-1500 T/H
冲模匹配 Cutting method		刀模/钢模 Knife/steel mold
冲力模式 Punching motor		伺服电机/15T/油压40-100T Servo motor / 15T / hydraulic 40-100T
运动模式 Run mode		8相机定位双卷对位对贴 8 CCD positioning, double roll alignment lamination

其他设备

Other Machines

卷对卷AOI在线检测

Roll To Roll online Inspection Machine

设备特点:

- 1) 使用正面光, 精准检测20μm的微开微短, 检测幅宽 250mm-520mm
- 2) 假点少, 在线打标判废
- 3) 高度智能化建模, 一键导入 Gerber 资料
- 4) 检测速度快, 可达4-6m/min
- 5) 检测50μm以上线宽线距的单/双面汽车板
- 6) 检测机器自动纠偏, 收卷整齐度小于2mm
- 7) 线路短路、断路零漏报, 同时覆盖多铜、残铜、狗牙边等检测

Equipment Features

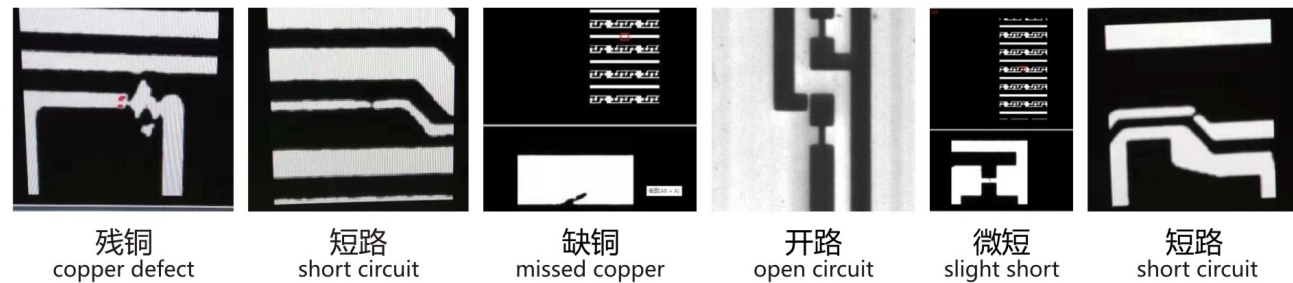
- 1) Use of frontal light, accurate detection of 20μm micro-open micro-short, detection width 250mm-520mm
- 2) Few false spots, online marking to reject
- 3) Highly intelligent modelling, one key import Gerber data
- 4) Fast detection speed, up to 4-6m/min
- 5) Inspection of single/dual-sided automotive boards with line width and line pitch above 50μm
- 6) Automatically corrects the deviation of the inspection machine, the neatness of the reel is less than 2mm
- 7) Short circuit, broken circuit, zero leakage, while covering the detection of multiple copper, copper residue, differential edge, etc.



产品参数 Machine parameters

项目名称 Item	Type 型号	VT2552AOI
最小线距/线宽 Min Line Spacing / Line Width		50μm/50μm
检测速度 Detection speed		4-6m/min
检测幅宽 Detection width		250mm-520mm
板厚范围 Thickness range		0.1mm - 1mm
导入资料格式 Imported data format		Gerber RS-274X、ODB+、
可检测缺陷类型 Detectable defect types		短路、开路、缺口、毛刺、针孔 Short circuits, open circuits, nicks, burrs, pinholes
复检方式 Re-inspection method		在线判断 Online judgement
报表形式 Form of report		分类统计各类缺陷 Classification and statistics of various defects
机器外形尺寸 Outline size		(L)2710mm* (W)130mm*(H)1840mm

实际检测缺陷图 Defects diagram



其他设备

Other Machines

卷料裁切机

Roll To Sheet Cutting Machine

产品参数 Machine parameters

项目名称 Item	Type 型号	VT500CQ
电压 Voltage		200V
功率 Power		1.5kw
裁切长度 Cutting length		0.1-9999.9mm
最大宽度 Max. width		500mm
设备尺寸 Outline size		2000×1030×1000mm
最大收卷直径 Max. winding diameter		600mm
最大承重 Max. load capacity		200kg



撕膜机

Film-tearing Machine



产品参数 Machine parameters

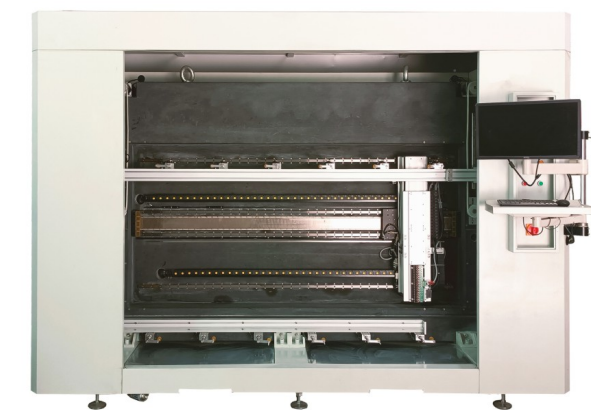
项目名称 Item	Type 型号	VT500SM
产品尺寸 Outline size		500*500
生产效率 Speed		450PCS/H
气压/耗气量 Air pressure/air consumption		0.6~0.8MPa/ 2L/H
工作电压 Operating voltage		(380V、220V) 50HZ
整体功率 Overall power		10KW

刻网机

Screen Engraving Machine

产品参数 Machine parameters

项目名称 Item	Type 型号	VT500KW
功率 Power		2.5KW
激光自写头组数 Laser point number		3组
刻网尺寸 Screen engrave size		≤1940*500MM
重量 Weight		2500KG
设备尺寸 Overall size(L*W*H)		L3160*W1450*H2450(MM)



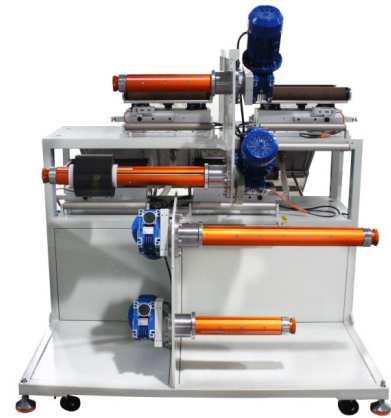
其他设备

Other Machines

卷料单/多工位收、放料机

Single/Multi-Station Rewinder & Unwinder

配合蚀刻线osp/vcp放卷、收卷
Uncoil and rewind with etched line osp/vcp



产品参数 Machine parameters

项目名称 Item	Type 型号	VT300SJ-4/VT300FJ-4
产品宽度 Product width		300MM
气胀轴直径 Air shaft diameter		3寸
收料方式 Rewinding method		纠偏收料 Web guide correction
四工位放料机尺寸 4-station unwinder dimension		1300*1260*820MM
四工位收料机尺寸 4-station retractor dimension		2150*1500*1450MM

片料单/多工位尾端收料机

Single/Multi-Station Stacking Machine



工作原理

材料从隧道炉烘干后出来过渡到收料机的滚筒上，通过对其气缸对齐后，由机械手吸盘将材料放置到卡料平台上叠好，叠至一定的数量后有人工将整叠材料取出来即可。

Working principle

After drying material comes out from the tunnel belt dryer then flow to the roller of stacker, after alignment material will be picked up and put it on the unloader, when reaches to a certain quantity, manually take out a stack of material.

固化线系列

Curing Line Series

IR固化线

IR Tunnel Furnace



卷对卷PET/PVC等柔性产品;片材PVC/PET/FPC等材料IR固化支持定做二层/三层/四层/多层结构炉体,达到节省空间,减少能耗作用。

Apply to roll-to-roll PET / PVC and other flexible products, sheet to sheet PVC / PET / FPC and other materials for IR drying. Customized multilayer tunnel line can be supported.

固化线系列

Curing Line Series

LED UV光固机

LED UV Curing Machine

VT500UV-W

产品特点 Features

- 1.采用国际标准395波长;
 - 2.使用寿命20000小时以上
 - 3.光功率10瓦每平方厘米;
 - 4.电功率360瓦每10公分
1. Using international standard 395 wavelength.
 2. Service life is over 20,000 hours
 3. optical power 10w/ square centimeter
 4. electric power 360w/ per 10 cm.



固化线系列

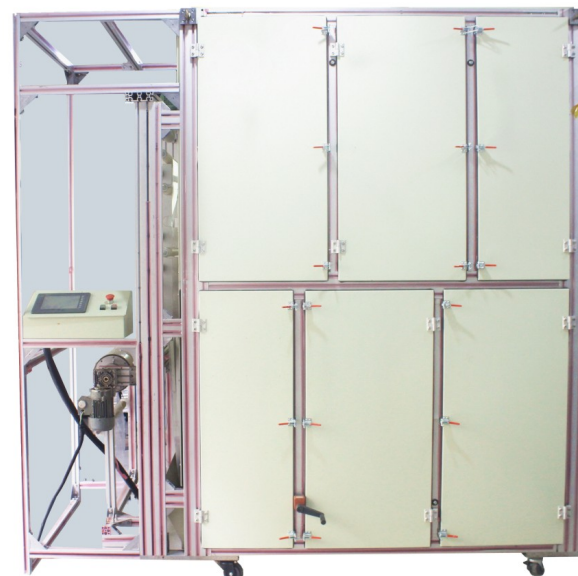
Curing Line Series

卷料悬浮立式烤箱

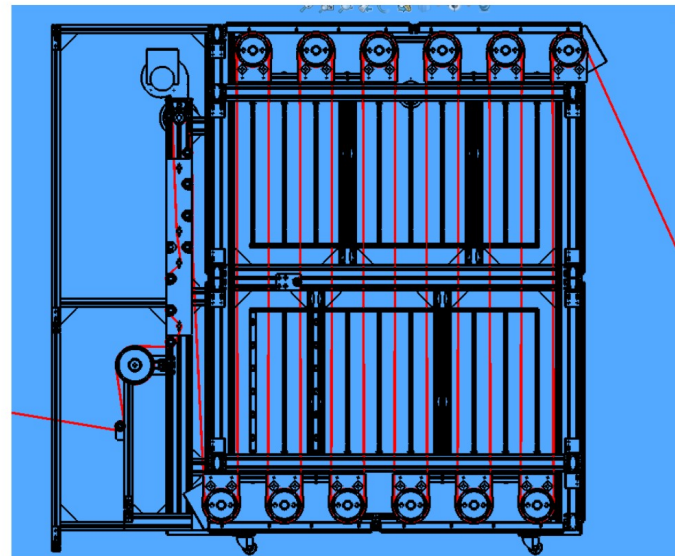
Roll To Roll Suspension Vertical Drying Oven

适用范围 Application

配合支持涂布、印刷双面单面无接触防划伤恒张力卷对卷中波管热辅助辐射烤膜固化，每层每块板可单独控制、具有占地小、节能等特点。
With support coating, printing double-sided, single-side non-contact anti-scratch constant tension coiling medium wave tube thermal auxiliary radiation baking film curing, each layer and each plate can be independently controlled, with small footprint, energy saving and other characteristics.



实拍图
Real picture



穿线路
Threading demonstrate

产品参数 Machine parameters

项目名称 Item	Type 型号	VT500XFKX
设备升温时间 Equipment temperature rise time		Approx*.15 minute
温度设定范围 Temperature setting range		室温---200°C可设定 Room temperature - 200°C settable
温度控制方式 Temperature control method		PID闭环控制+SSR驱动 PID closed loop control + SSR drive
异常报警 Abnormal alarm		温度异常 (恒温后超高温或超低温) Temperature abnormalities (super high or super low temperature after constant temperature)

整线方案参考

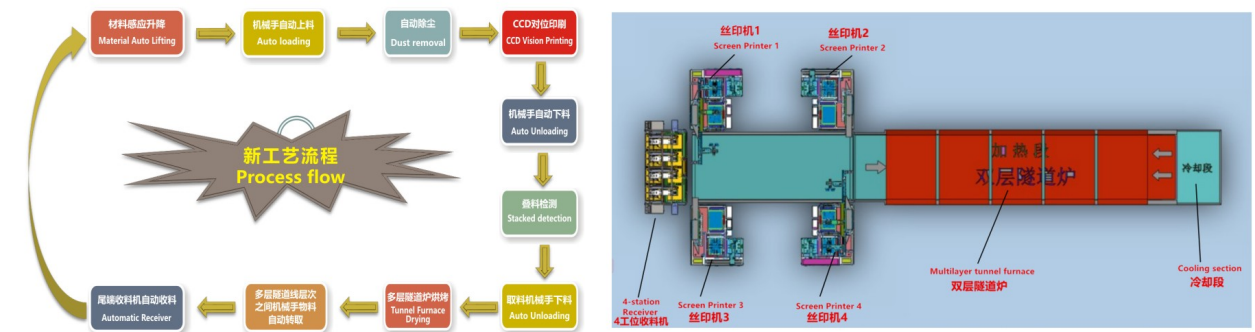
Automatic Production Line Solution For Reference

全自动印刷整线方案

Fully Automatic Screen Printing Line Solution

适用于：复合板, IMD/IML, 薄膜开关, FPC线路板等大批量多次印刷, 节省空间, 提高效率。

Suitable for: laminates, membrane switch, FPC, IMD/IML, car dashboard etc, overlay printing in large batches. Save space and increase efficiency.



整线方案参考

Automatic Production Line Solution For Reference

自动涂布、曝光一体生产线

Automatic Production Line Solution For Reference

涂布+悬浮烤箱+曝光全自动线方案

Coating + Vertical Circulation Oven + Exposure fully automatic line solution

